



RESIDE  
MANCHESTER

ELISABETH GARDENS

Elisabeth Mill Elisabeth Gardens  
Stockport, SK5 6FX

**Offers In The Region Of £165,000**



## Elisabeth Mill Elisabeth Gardens

, Stockport, SK5 6FX

Welcome to this immaculate one-bedroom apartment located in the desirable Elisabeth Gardens, Stockport. Situated on the top floor, this charming property offers a delightful living space of 551 square feet, perfect for individuals or couples seeking a comfortable home.

As you enter, you will find a well-proportioned reception room that provides a warm and inviting atmosphere, ideal for relaxation or entertaining guests. The apartment features a thoughtfully designed bedroom and the bathroom is modern and well-appointed, catering to all your daily needs.

One of the standout features of this property is the communal roof terrace, which offers a wonderful outdoor space to enjoy fresh air and stunning views of the surrounding area. It is an excellent spot for socialising with neighbours or simply unwinding in the sunshine.

Additionally, the apartment comes with parking for one vehicle, providing convenience. Elisabeth Gardens is well-connected, making it easy to access local amenities, transport links, and the vibrant community that Stockport has to offer.

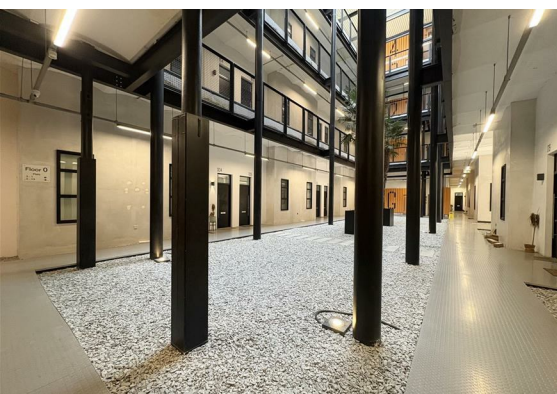
This property is presented in immaculate condition, ready for you to move in and make it your own. If you are looking for a stylish and well-located apartment in Stockport, this is an opportunity not to be missed.

- Top Floor apartment
- Immaculate presented
- One Bedroom
- Large open plan living and kitchen
- Modern Bathroom
- Allocated Parking





- Communal roof terrace
- Panoramic views
- EPC Rating D



## Floor Plan



**Floor Plan**  
Floor area 51.2 sq.m. (551 sq.ft.) approx

Total floor area 51.2 sq.m. (551 sq.ft.) approx

This Floor Plan is for illustration purposes only and may not be representative of the property. The position and size of doors, windows and other features are approximate. Unauthorized reproduction prohibited. © PropertyBOX

## Viewing

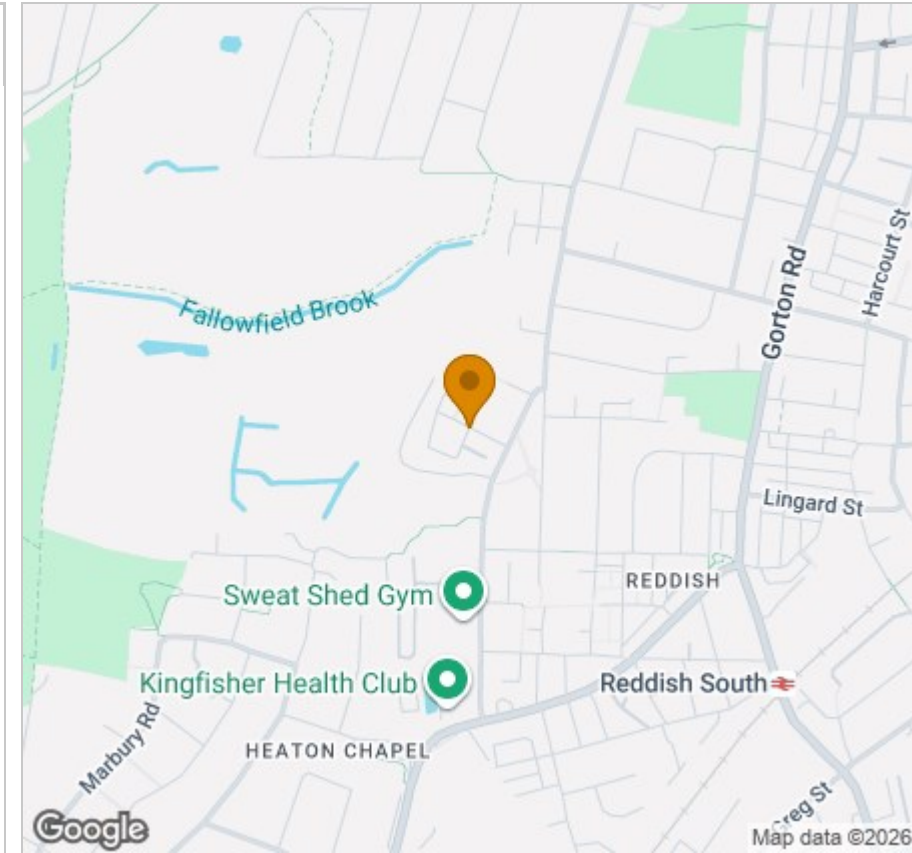
Please contact our Reside Stockport Office on 0161 808 0660 if you wish to arrange a viewing appointment for this property or require further information.

These particulars, whilst believed to be accurate are set out as a general outline only for guidance and do not constitute any part of an offer or contract. Intending purchasers should not rely on them as statements of representation of fact, but must satisfy themselves by inspection or otherwise as to their accuracy. No person in this firm's employment has the authority to make or give any representation or warranty in respect of the property.

57a St Petersgate, Stockport, Cheshire, SK1 1DH

Tel: 0161 808 0660 Email: [info@residestockport.com](mailto:info@residestockport.com) [www.residestockport.com](http://www.residestockport.com)

## Area Map



## Energy Efficiency Graph

